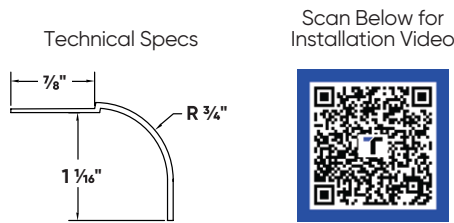


3/4" Bullnose Kerfed Bead

Doorways and windows are fantastic areas to get creative with your finish options. The leg of our 3/4" Bullnose Kerfed Bead can be inserted into the channel of many preformed door and window jambs to create attractive rounded encasements. Its archway version looks great on curved doorways and window frames.

Installation Guide



Before Installation:

Use with pre-formed kerfed door and window jambs. Measure, cut and dry fit the bead, leaving a 1/2" gap at the floor.

Step 1:

Coat both the bead and drywall with Trim-Tex 847 Spray Adhesive.

Step 2:

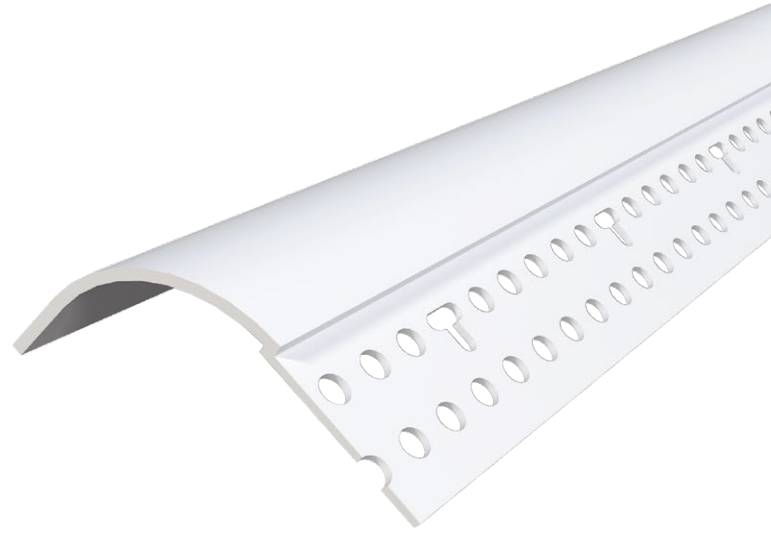
Press the bead in place, applying pressure to the mud legs.

Step 3:

Staple every 6"-8" using 1/2" staples.

Step 4:

Finish with drywall compound.



Step 1:



Step 2:



Step 3:



Step 4:

